



Shop Floor Integration

From sensor to ERP

We make your factory smarter



Benefits:



New automation options and simplified processes



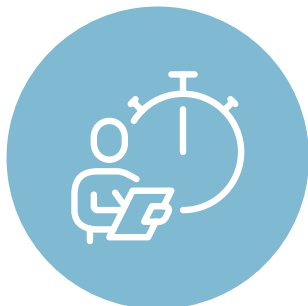
Increased throughput for existing production facilities



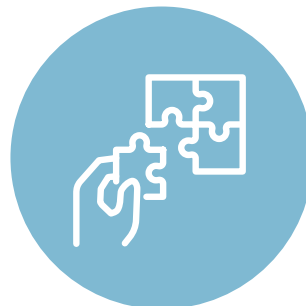
Decreased rejects



Decreased personnel expenditure



Reduced material bottlenecks



Integrable into existing infrastructures

SFI Overview

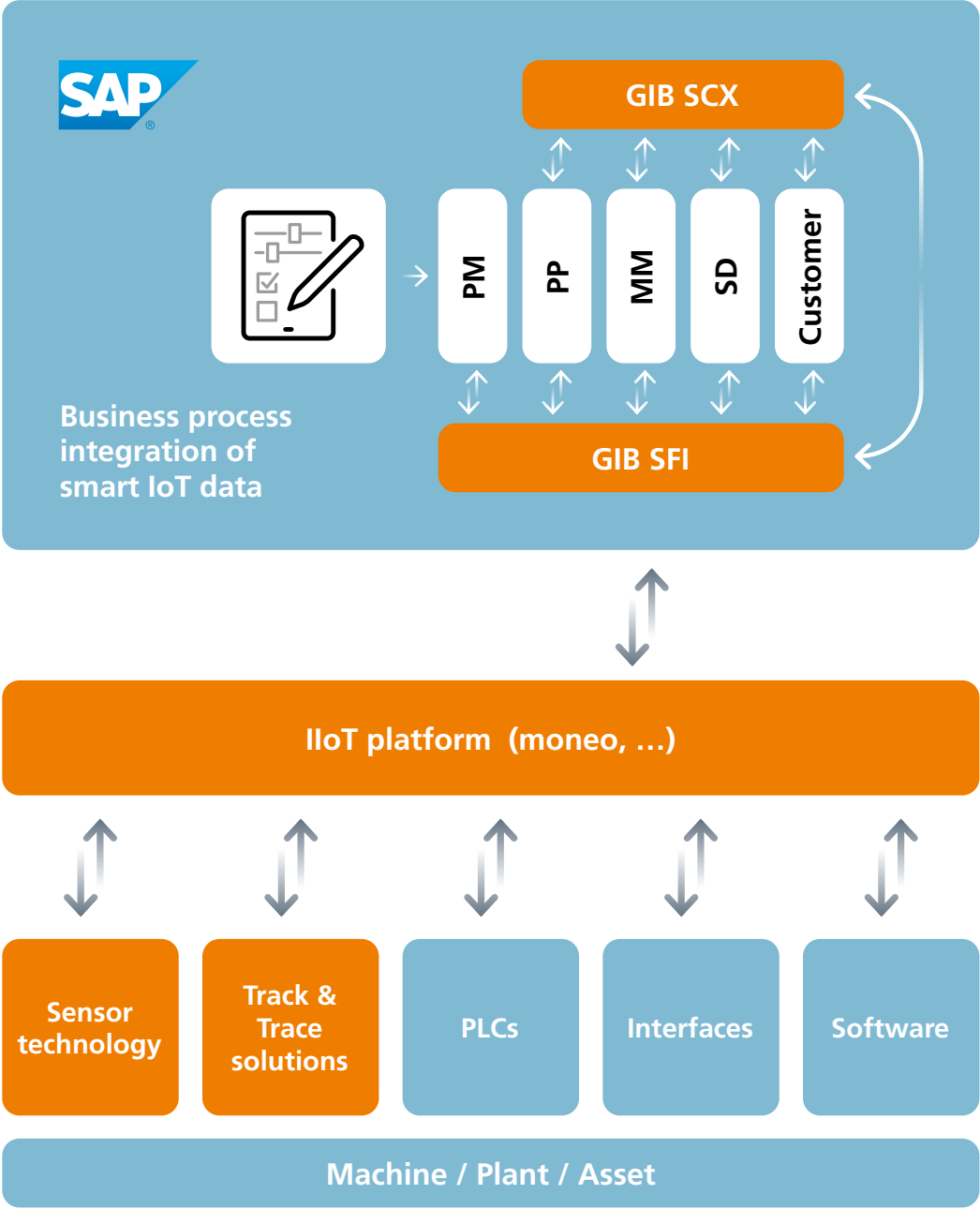
Why Shop Floor Integration?

In a modern, future-oriented and digitized company, it is important to combine processes with each other to remain competitive. Therefore, a real-time connection between the physical level (OT) and the planning level (IT) must be established.

SFI, which is fully integrated into SAP as an add-on, uncomplicatedly closes the gap between OT and IT with its low investment and training costs and short project runtimes.

Many out-of-the-box functionalities contribute to this, such as the automatic creation of material documents, goods movements or maintenance documents.

In this way, SFI from ifm offers continuous communication from the sensor to the SAP ERP system – and this with a fast ROI.

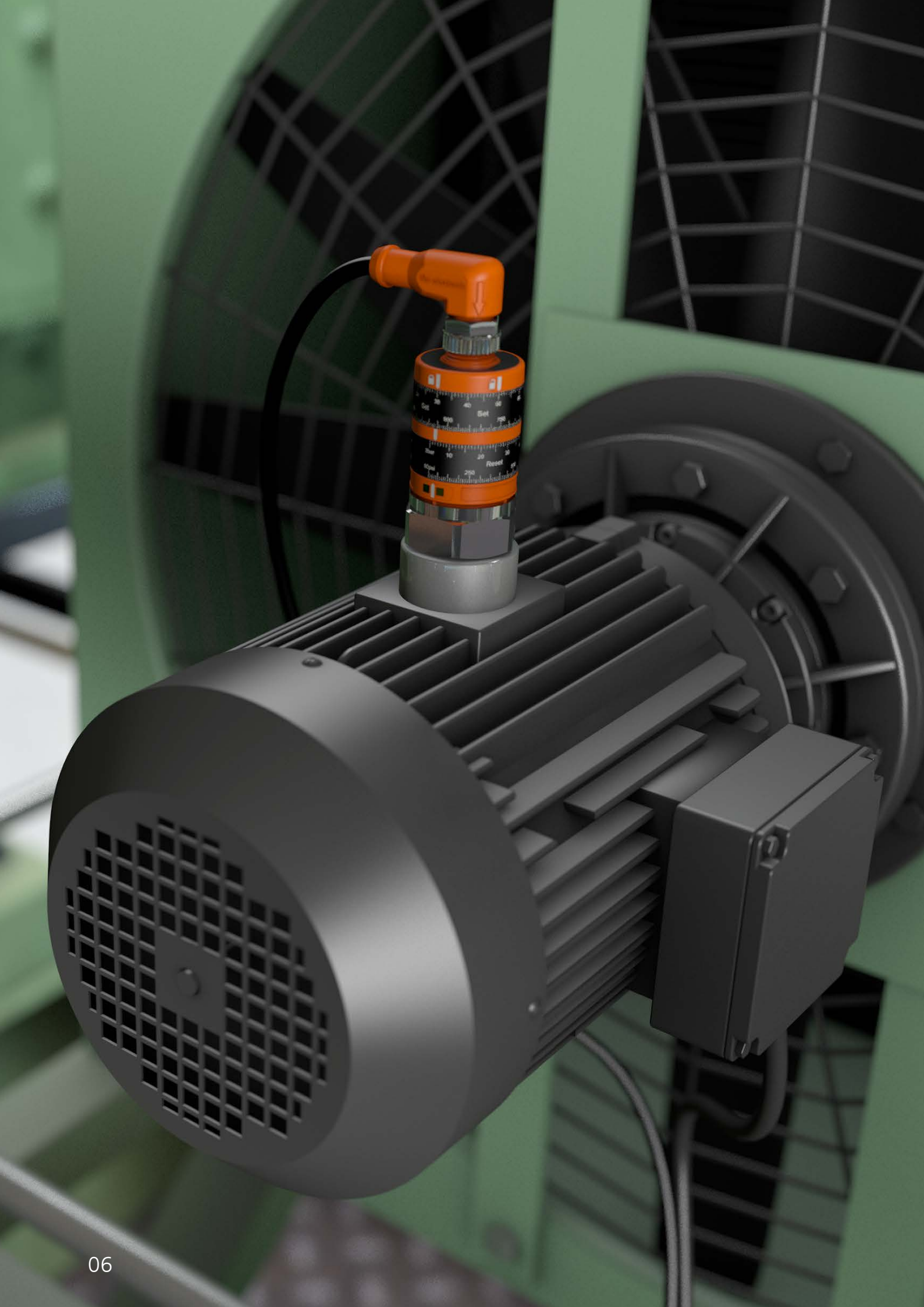


SFI Overview

What does SFI do?

SFI links the physical signal sources that are provided by an underlying infrastructure, the so-called IIoT platform, to business objects in the SAP ERP system (e. g. an equipment or material).

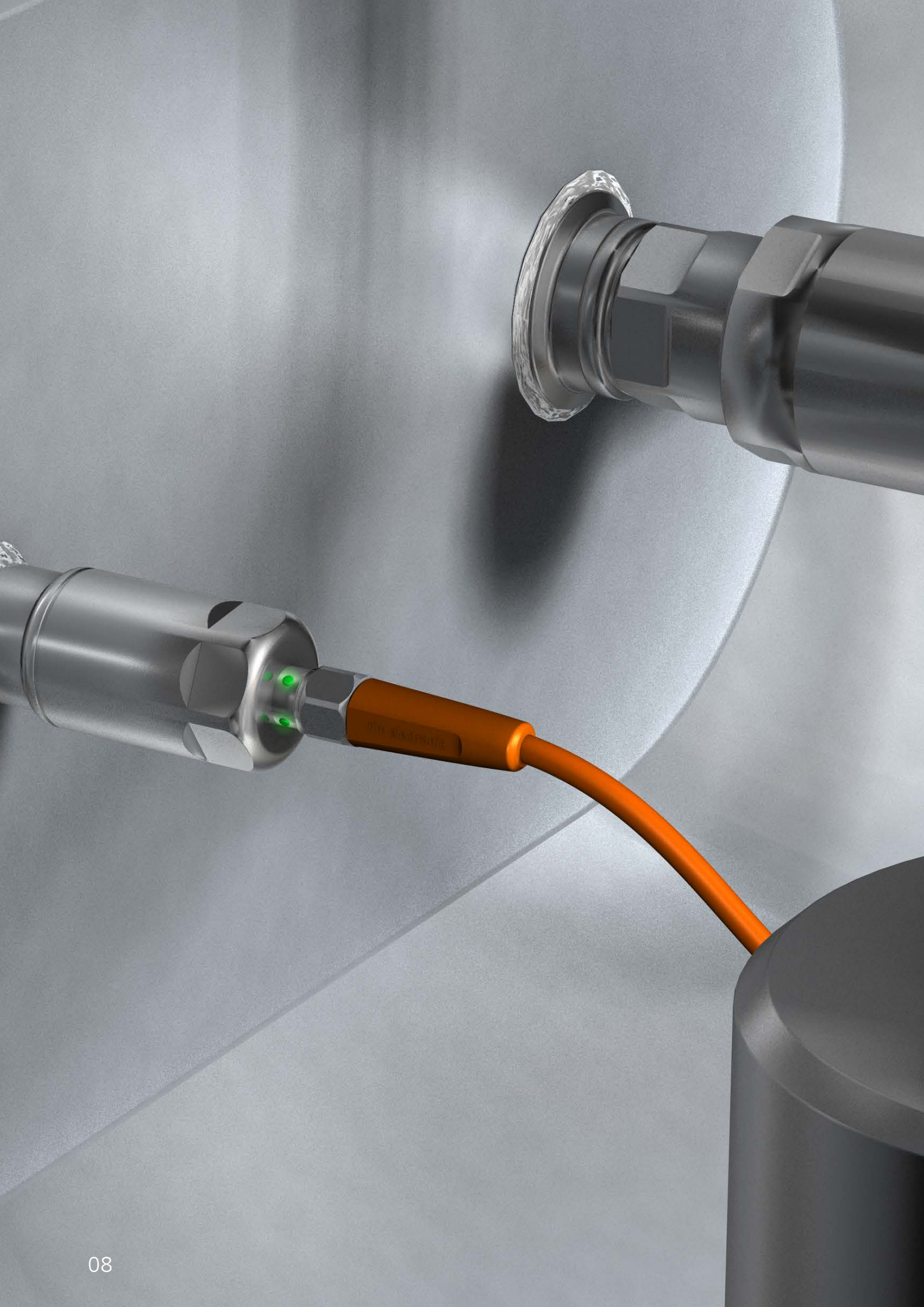
If an event occurs in the IIoT platform for a monitored signal, it is passed on to SFI and can trigger freely definable actions in the SAP ERP system, often the creation of documents. In addition to ifm moneo, a growing number of other IIoT platforms is already supported.



Condition monitoring

Best-Case. Maintenance

- ✓ Higher production throughput thanks to reduced, precise and plannable maintenance
- ✓ Reduced downtime due to sensor-based monitoring of neuralgic components
- ✓ Reduced personnel costs thanks to automatic recording of energy consumption and mileage
- ✓ Real-time monitoring through automated filling of the maintenance order planning
- ✓ Lower costs due to longer use of tools, oil, cleaner, etc. due to permanent condition control
- ✓ Reduced material consumption and rejects through the recording of defect rates



Material monitoring

Real time.

Replenishment

- ✓ Greater transparency through sensor-based detection of material quantities (e. g. by 3D camera, level sensor, etc.)
- ✓ Automated generation of a material reservation (or KANBAN signal, depending on the customer process) in real time at falling below the defined minimum quantity
- ✓ Fewer bottlenecks in the material flow through demand-oriented and automatically provided replenishment
- ✓ More time for value-adding activities through reduced monitoring and recording efforts



Reduction

Save more. **Sustainability**

- ✓ Automatic, sensor-supported recording of energy consumption: electricity, water, gas, compressed air, etc. as basis for the development of an energy data management and for the determination of CO₂ footprints
- ✓ Reduced material usage through condition monitoring of consumables (oil, cleaner, etc.)
- ✓ Automatic recording of error rates helps reduce rejects



Scan the QR code to
learn more about
Shop Floor Integration.

SAP-BASED SUPPLY CHAIN SOLUTIONS FROM IFM

As licensed SAP Silver Partner and expert for efficiency and transparency in the supply chain, ifm's software division offers i. a. holistic software solutions that are fully integrated in the SAP system.

Internationally, ifm has been known as an automation specialist for decades. Since 2016, the digitization of all business processes and their integration into the SAP/ERP system has also become an important business area of the ifm group.

With "GIB SCX", logistical processes are optimized from demand to production planning up to procurement and inventory management. This makes supply chain processes faster, more transparent and more efficient.

The out-of-the-box supply chain solutions run on SAP ECC 6.0 and SAP S/4HANA and are available both

on-premises and in the cloud. They help identify and eliminate overstocks, reduce process costs, and increase liquidity by releasing tied-up capital.

The IIoT tool "GIB Shop Floor Integration" enables the connection of the production level and thus guarantees continuous communication from the sensor to the SAP.

ifm's SCM solutions are scalable up and down. In this way, both complex corporate requirements and the budget specifications of medium-sized companies are met.

More than 900 customers worldwide already rely on ifm's supply chain solutions and thus benefit from sustainable inventory optimization while increasing delivery readiness.

ifm-business-solutions.com



SAP® Certified
Powered by SAP NetWeaver*

SAP® Certified
Integration with SAP S/4HANA*

SAP® Certified
Integration with SAP S/4HANA* Cloud